

ASSINGTON

NEWS



JULY 2025

GRAYHAM HOGGER

Free local delivery

(Baileys, Allen & Page, Dobson & Horrell, Saracen, Naf)

**HORSE/ANIMAL FEED & BEDDING
HAY, HAYLAGE & STRAW
MUSHROOM COMPOST
SHAVINGS & HORSE-FEED
(Large and small bales)**

GRAYHAM HOGGER

TEL: 01787 210074 or 07860 536899

DANIEL ECUYER THATCHERS

MASTER THATCHER

Long straw & water reed

(Free quotes for thatch owners)

Briars, Dyers Lane, Assington

01787 210252 or 07956 585133

ecuyerthatchers@gmail.com

MEADOW GRACE

PLUMBING HEATING BATHROOMS

Plumbing and heating engineer with over 20 years' experience. Providing a friendly, reliable and professional service with an emphasis on high standards of workmanship and conscientiousness.

- Full bathroom suite installation (inc. design and management)
- Boiler installation, replacement and maintenance
- Full heating system installation and upgrade
- Hot water cylinder upgrade and replacement
- Power flushing
- All general plumbing

☎ **Sean: 07983 403 289**

✉ **meadowgraceph@gmail.com**

📷 **instagram.com/meadowgraceph**



The Barn
Assington CO10 5LW



The Dog & Comb
Luxury Dog Grooming

Please phone Sarah
07860253017

Essex & Suffolk gliding club are always keen to attract new members. You can start gliding from 13 go solo at 14 and no upper age for seniors, provided you're medically fit.

If interested please visit our website:
www.esgc.co.uk

Duncan's Marquee Hire



07768 605 250 / 01787 212 379

Profline 5m x 10m Professional Marquee PVC 550

Boutiqueprint

Wide Format Printers

PVC Banners

Posters

Retail Signage

Wallpapers

Vehicle Wraps

Vinyl Decal

Tel: Assington 212379

Email: duncan@boutiqueprint.co.uk



THINGS TO DO

Boxford Bowls Club Craft Fair

Saturday 19th July

9.30am - 12.30pm

Boxford Bowls Green

Free Admission

Craft Stalls - Artisan Glass, Candles, Cards, Crochet, Paintings, Wood Turning, and more!

Other Stalls - Books, Cakes, and Plants

Refreshments available and the opportunity to watch some bowling.

Access via the footpath opposite the White Hart Pub and from Homefield Playing Fields.

Parking available at Homefield Playing Field



Assington Baby & Toddler Group

Mums, dads, grandparents, carers and childminders living in and around Assington. Bring your little ones to a friendly, accompanied babies and toddlers group in the lovely, airy Village Hall

Summer 2025 dates!

10th July

11th September

Thursday once or twice a month in termtime

from 9:30-11.00 am, at £3 per family

Revd Tricia Box - 07747124592



Leavenheath Fete Sat 5th July 11:45-5:30

20 stalls, live music performances from Hadleigh Ukulele group, Happy Sounds Choir, CCJs band and Sarah Mai 1940's vocalist.

Attractions include:

Children's entertainer, classic cars, military vehicles, bouncy castles, dancing, games, face painting, glider,

1940's memorabilia, food all day, bar, cream teas, new playground, wonderful raffle prizes

Opened by MP James Cartlidge
Free entry, Free parking

ASSINGTON CHURCH FETE SATURDAY 30th AUGUST 2025 2pm at the Village Hall

FREE entry

Big Prize Raffle

Afternoon Teas

Bottle tombola

Books

Bric a Brac

BBQ

Children's tent

All the usual stands, stalls and competitions

Information: Bronwen Stacey 210354

Donations:

Roger Britcher & Linda Britcher,
The Old Schoolhouse (bottles tombola)
Simon White



'Last Tuesday'

Coffee and Chat
in the Village Hall

The next meeting will be on
Tuesday 29th July at 10am
See you there!



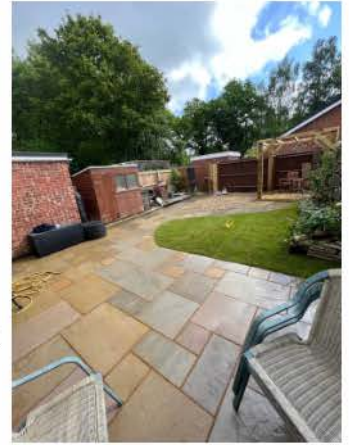
LANDSCAPING

Call us on: 07539872747

BMQLandscaping@outlook.com & More

Services:

Patios, Pergolas, Brickwork
Sleepers, Turfing, Fencing



5 ★ on Facebook and Google



Ventanilla Blinds

Conservatory Blinds - Day and Night Blinds

Rollers - Verticals - Roman - Pleated

Wooden, Faux Wood & Metal Venetians

Sheer Rollers - Blackout Blinds

Perfect Fit Pleated, Roller & Venetian

Contact Mike for a fast and friendly service

01787 313677 or 07966 371963

www.ventanillablinds.com

PARISH CHURCH NEWS



<https://www.assingtonchurch.org.uk>

*Letter from the
Rev Daniel Whiffin,
Vicar of Bures
with Assington
and
Little Cornard*



Dear friends

I am writing this to you having just returned from the marvellous Churches' Weekend Away. 40 of us enjoyed each other's company and teaching about how the 66 books of the Bible are 1 story—God's love letter to his world. We were catered for excellently at the beautiful Launde Abbey, near Oakham.



We were surprised with an unprogrammed activity. At 2:30am on Saturday morning we were all awakened by the fire alarm. To add to the adventure, some of us had to traverse temporary deer fencing in the pitch black. We reached the safe assembly point and gathered to listen to the Warden, who said that there was no fire, and we could return to bed. The system in this large Tudor building needs to be sensitive so there is enough warning for all to get to safety. So back we went and tried to set the adrenaline aside and sleep.

What if God sent messenger after messenger to sound the alarm? What if, when no-one reacted, God came himself to show that there is a fire in the house of our relationship with him? If God is truth, can he give a false alarm? What if the third of the world who believe Jesus is the refuge place—the saviour—are right? We have a choice, of course: get to safety, or ignore the alarm and stay tucked up warm in bed hoping it will all be ok. I know which I think requires greater faith.

May you have a splendid summer

Daniel



ASSINGTON CHURCH SERVICES in JULY

6th July @ 10.30am HOLY COMMUNION

*(13th July Bures @ 10.15am Big Top Service
13th July Little Cornard @ 10.30am Morning Worship)*

20th July @ 10.30am MORNING WORSHIP

*(27th July Bures @ 10.30am Morning Worship
27th July Little Cornard @ 10.30am Holy Communion)*

THE CHURCH IN ASSINGTON IS OPEN FOR VISITORS

**ON SATURDAYS AND SUNDAYS,
and at other times by arrangement with key holders:
Bronwen Stacey 01787 210354
John Symons 01787 211534**

Vicar: Daniel Whiffin 07309 947039
email: vicar@parishchurch.co.uk
Associate Priest :
Rev Simon White 07572 418555
Reader: Dr John Symons 211534
Churchwarden: Bronwen Stacey 210354
Organists: Bronwen Stacey
Peter Dakin
Secretary: Emily Cartlidge 07967 724266
Treasurer: Tony Hufnagel

VILLAGE NEWS

MID-TERM ALLOTMENT REPORT July 2025

HAPPYSOUNDS CHOIR NEWS – NEW MEMBERS WANTED!

It only seems about 5 years since I came to Assington and submitted a request to the Parish Council signed by myself and 5 others to suggest that the village should have allotments within its boundaries. It is in fact unbelievably 18 yrs ago.



Took a bit of time and one or two false starts but we did kick off at centuries old stackyard, where we were for 5 yrs and now on a proper fenced off designated site, with 3 points of running mains water, at the end of Meadow Way for coming up to 6 yrs. Many people involved during this time who all deserve thanks but it is a great asset for the village that can and should be valued and maintained for future generations.

Growing our own food is very important for better diets and our own health, also for the mental strength that we all need, it is said that we look after our plants and plots but in fact they take care of us. Two hours daily talking to the plants is better than any medicine.

Currently, for the first time ever, all 12 plots are taken and 5 of them are split into half plots, so we currently have 17 tenants growing and gardening on our little site and while in the past we have relied quite heavily on tenancies from outside our village, we now have a big majority from Assington itself. A really good achievement and long may this continue, due to our constitution we quite rightly give precedence to Assington residents over other applicants, and this will continue into the future.

Join us for our next performance at **Leavenheath Fete on July 5th at 1:50 PM**—a fantastic free event for all ages, featuring all-day live music, classic vehicles, and a variety of stalls to explore.

We will try to have an open day later in the summer for the whole village to look around the plots but any Sunday afternoon is a good time to find myself or another out there working, so come on over for a chat, we are all quite proud of what we have achieved. We are supported, although not financially by our parish council in our aims, although they have facilitated and provide our water supply. We in turn try to support the annual village horticultural show with entries and volunteers to keep it running and this is a great occasion in the village calendar and we hope this can continue for many years also. Sunday August 17th this year. So please try to enter a few of the classes to support this event into the future. Cooking and crafts feature as well as junior classes as well. We hope to have a manned allotment stand. So come up and see us sometime.

The choir will take a break in August, but we'll be back on **Thursday, September 11th** at the village hall, ready to start rehearsals for our **Christmas fundraising concert at Long Melford Church**, where we aim to raise **over £2,000 for charity**. In previous years we've sung at Lavenham Church, Bures Music Festival and the Quay Theatre, and have exciting plans for 2026.

Bryn Hurren (chair)

We welcome new members twice a year! The next intake is **September/October**, followed by **January/February**. Our **Assington branch currently has 48 members**, and this September, we have space for **six more singers**. It's a wonderful way to meet new friends and share the joy of music, and we are particularly keen to hear from tenors (any gender) although everyone is welcome.

A DATE FOR YOUR DIARIES:

For more details, visit <http://www.happysounds.co.uk> or email janette.gunn@yahoo.com. We can't wait to sing with you!

ASSINGTON HORTICULTURAL SHOW, SUNDAY 17th AUGUST

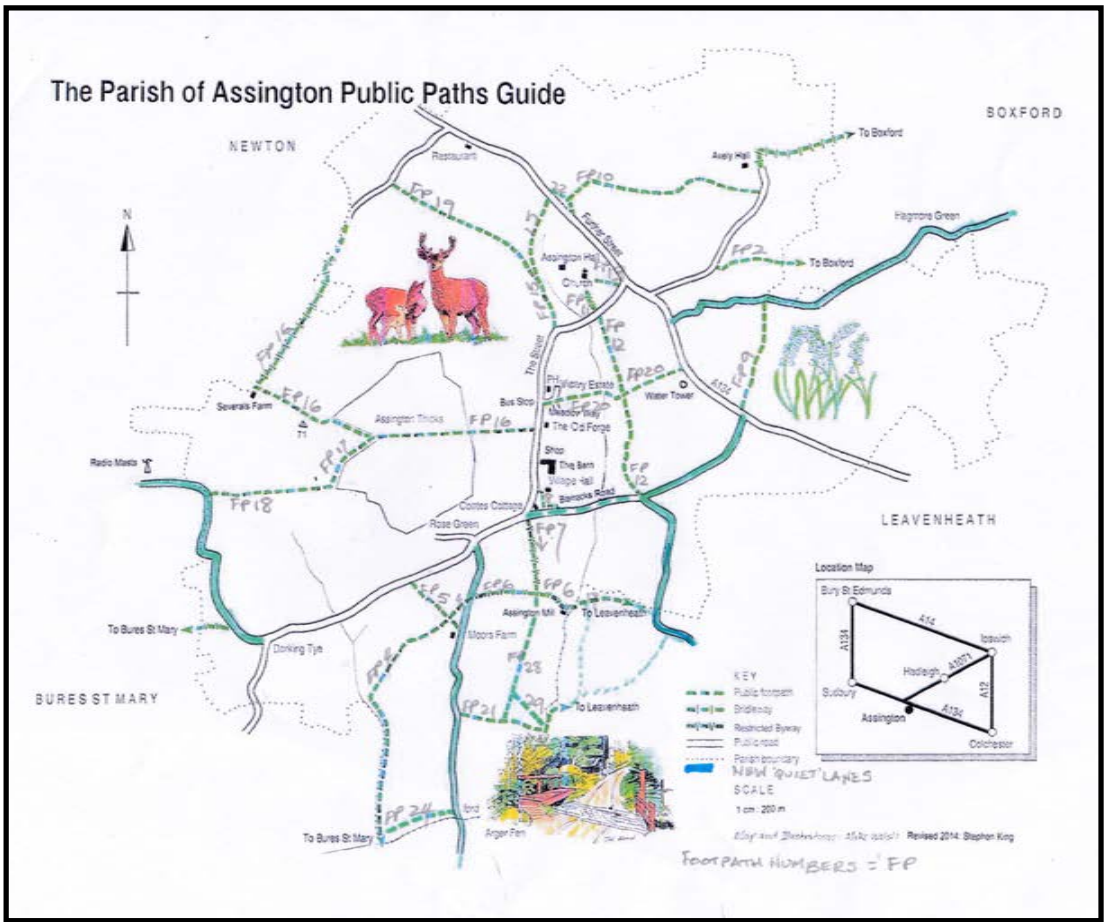
BAPTISM IN ASSINGTON CHURCH

It was a delight to christen little Sophie Howard in Assington church on Sunday 8 June 2025 in a service of Holy Baptism. Proud parents Kim and Chris brought 4 month old Sophie along with her godparents, family and friends for this great celebration and step of faith. We gave thanks to God for Sophie and made commitments on her behalf that she will follow Jesus, hoping she will want to confirm those commitments for herself when she is older.

Sophie's name has now been added into Assington's Baptism Register which starts way back in 1897 and has space for more. Please get in contact with me for a chat if baptism is something you are thinking about for yourself or someone else.

Revd Simon





WANTED: FOOTPATH WARDEN(S)

The Parish Council is seeking a volunteer (or perhaps more than one to combine the role) to be the new Footpath Warden.

If you enjoy walking or running around the village, maybe even have a dog which you take for various walks around Assington, then please consider whether you could help in this way.

The duties are, basically, to walk all the various marked footpaths around the village over an unspecified period of time, and to ensure that any 'issues' such as broken stiles, or signposts, are reported to the Parish Clerk, who will then make a formal request for the repair to be carried out.

A Contractor makes up to three cuts along the paths every year, to try to ensure that they do not get overgrown or impassable, but again, any problems in that respect can be reported via a phone call to the Clerk, Christine Hargan.

If you are able to offer assistance, and contribute in this way to village life, please call Simon Thorogood to have a chat on 01787 227400



CLOSURE OF THE SHOULDER OF MUTTON

It is very sad for the residents of the village, particularly, in addition to other visitors and regulars of our local village pub, to find that it has closed until further notice.



The owners would like the community to know that once the opportunity presents itself the doors will be back open once again

Wardale Williams

THE OPTICIANS

INDEPENDENT • EXPERIENCED • PROFESSIONAL

Qualified and caring NHS opticians
for you and your family since 1947.
Varifocal specialists.

50 Gainsborough St Sudbury
CO10 2ET 01787 372492
www.wardalewilliams.co.uk



Boxstore

**The Local
Self Storage
Company
For all domestic and
business needs**

**See website for details
www.boxstore.co.uk
tel : 01787 210350**



ASSINGTON SENIORS EVENT SUMMER STRAWBERRY AFTERNOON TEA



**SUNDAY 10TH AUGUST
1.30PM-3.30PM**

**THE FOXES DEN
ON FURTHER STREET ASSINGTON**

Senior residents aged 65 and over are invited to attend the second event of 2025!! See the booking slip at the bottom of this page The cost is at a reduced rate of £25 PER PERSON for a superb afternoon tea, with a glass of prosecco. If you need a lift there, please put it on your booking slip and we will endeavour to get you there and return you back to the village after. Perhaps share a lift with someone who is attending. CLOSING DATE SUNDAY 3rd August. Please put your free in an envelope with you booking slip and post into 16 The Street Letter box. Add any dietary requirements.

For more info contact David on 07811108702

.....
Name.....

Dietary requirements.....

Contact No..... Lift required.....

NATURE WATCH

Earlier in the year we downloaded an app called 'Merlin bird ID' and which (among other things, I'm sure) records snatches of birdsong at a particular time, and identifies which birds are singing. We used it during our bluebell walks in The Thicks during April, and it identified, amongst a number of more 'common' birds, the song thrush, which seems to me to be a fast-disappearing bird; I remember that we had a number of thrushes in the garden when we first moved here in the very early 1990s.



In Great Britain and the Netherlands, there has been a more than 50% decline in its population, and the song thrush is included in regional Red Lists. The decreases are greatest in farmlands (73% since the mid-1970s) and believed to be due to changes in agricultural practices in recent decades. The precise reasons for the decline are not known but may be related to the loss of hedgerows, a move to sowing crops in autumn rather than spring, and possibly the increased use of pesticides. These changes may have reduced the availability of food and of nest sites. In gardens, the use of poison bait to control slugs and snails may pose a threat, as snails were always one of the main foods of the thrush, we were told as children, this being the explanation for any smashed snail shells found on the garden path or near large stones. If they like slugs they are welcome back in my garden any time, I can't believe the number, size and types of slugs to be found on a dark evening in Spring!

On 31 May at 7.07pm, I wondered what a specific bird was singing, and we recorded the following list singing in our back garden:

- blackbird
- greenfinch
- robin
- goldfinch
- woodpigeon
- bluetit
- wren
- goldcrest
- meadow pipit

We were surprised at the variety, which included some that we were totally unaware were 'living' in the garden, or close-by: in particular, the gold crest and the meadow pipit.

The goldcrest is the UK's smallest bird, and it favours coniferous and mixed woodland, but can



also be found in gardens and parks with large trees. Goldcrests feed on insects and invertebrates. The bird will flit among tree branches, catching small creatures such as spiders, flies and caterpillars. It often takes food from the underside of branches, hanging upside down to reach its prey.

Meadow Pipit numbers in the UK have been declining since the mid-1970s, resulting in this species being included on the Amber List of conservation concern. Apparently they are one of the most common birds on uplands, but may be found on farmland also.

They are slender, often drab, ground-feeding insectivores of open country. Like their relatives in the family, the pipits are monogamous and territorial. Pipits are ground nesters, laying up to six speckled eggs. On moorlands, meadow pipits are the most common 'foster parents' of young cuckoos. The adult cuckoo will lay a single egg in a meadow pipit's nest. After hatching, the cuckoo chick will push the other eggs or young birds out of the nest, giving its foster parents more time to concentrate on feeding their new, oversized chick.



This afternoon one of the birds identified was the Blackcap, which has a beautiful song. It is a common and widespread typical warbler. The male's typical song is a rich musical warbling, often ending in a loud high-pitched crescendo. The blackcap's closest relative is the garden warbler, which looks quite

different but has a similar song.

However, despite its name, the Garden Warbler is not really a garden bird except in mature gardens next to woods. Its song is similar to that of a Blackcap, but has longer mellow phrases.



BOX MOTH AND BOX MOTH CATERPILLAR

Many years ago we visited Hever Castle and its gardens, in Kent. As we were walking around and inspecting the gardens, we noticed that some box-hedge trimming had obviously been taking place very recently, and there were many box clippings lying around, on top of the hedges and on the ground nearby.

Deciding to try his hand at raising cuttings, man about the house collected a number of clippings, and once home, planted them up in the advised manner. He has tended them lovingly ever since, and has produced a number of ornamental box shrubs which are planted around the garden in a variety of positions, shapes and sizes.

In addition, more cuttings have been taken over the years, with the intention of "one of these days" planting a small, (and possibly quite basic) Knot Garden to replace the rather sad-looking lawn area at the front of the house, between the house and the barn. Although we hadn't finalised the plans, we had in mind something, which may have looked a little like this:



The time had almost arrived; retirement has now happened, and after a month (at least) of gallivanting around (both in the UK and abroad) in glee, there is now so much more time to do all those jobs.....

when what should also arrive, but Box Moth and Box Moth Caterpillar!! The words should strike terror into your hearts - especially if you have any box shrubs in your garden - not so much if not.

I think they first arrived in the garden last summer, but we didn't want to believe it and didn't investigate its too closely; then suddenly, this year, we have it absolutely everywhere, in every shrub of box in the garden, including in all the now-quite-large-and-definitely-ripe-for-planting pots of box!

To begin with, I found a few dead-looking leaves, some debris, and upon further investigation, some "webs" which when unravelled and investigated fully, disclosed a green caterpillar, or more than one. I started searching for more, and, having looked up the cause and the effects, followed the advice to cut out all the offending material, including of course, the caterpillars, and to destroy them in the best possible way. Well.....

the more I looked, the worse it got! Just before we went away (again), and thinking that we needed to provide a water supply for all the garden pots, a re-potting was muted, when the enormity of the caterpillar situation became apparent: it was not an easy decision, and was hard-fought, but the upshot was that, in the circumstances, and long-term prognosis of our box shrubs, it was finally agreed that we should abandon the idea of a box knot garden, (maybe a lavender-hedge knot garden instead?), and to first destroy all caterpillars in the pots of box, and also to burn the actual shrubs still in pots, rather than plant something which will give us a lot of grief and pain in the future.

There are still several box shrubs growing in the garden, plus a rather long Box hedge, which, upon close inspection is absolutely riddled with it. I think drastic measures are necessary, and will probably be decided upon and taken in the not too distant future.

Not only that, I recently noticed a number of caterpillar webs on a Euonymous shrub; oh dear!see my next instalment



Box tree caterpillars are a relatively

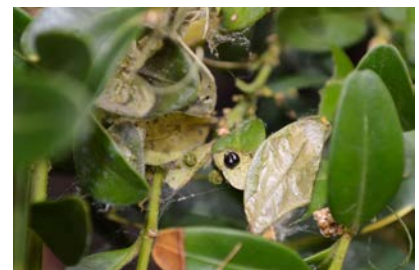


new pest. Native to east Asia, they're thought to have hitched a ride on imported plants to Europe, where they were first spotted in 2007. The first moths were found in private gardens in Britain in 2011, initially in the south east, where they are now a major problem. They're also now spreading across the UK.

Box tree caterpillars are the larvae of a moth which lays its eggs on the undersides of box leaves. The resulting caterpillars create cobweb-like webbing over their feeding area, and devour the box leaves. After around a month, the caterpillar forms a chrysalis which emerges as a box tree moth, which then mates, perpetuating the cycle. Box tree caterpillars can be a problem from spring to autumn, producing multiple generations. The caterpillars overwinter among box foliage, resuming feeding the following spring. They are a serious threat to Box plants and can completely defoliate them, ruining prized topiary and native box hedges. The caterpillars cause most of their damage between March and October. A box ball can be destroyed within a week if action is not taken.

The RHS is predicting that it could be a bumper year for box tree moth. This is most probably due to a mild winter followed by a warm spring, which meant the caterpillars' activity started earlier than usual. If temperatures hold, the team predict that we could see an additional generation in the autumn; currently there could be two or three generations per year.

Signs of box tree moth – defoliation and dieback, green frass (excrement) pellets, webbing and black head capsule shed during moulting.



KEMPSON GARDEN SERVICES

*All year round, friendly & reliable service
RHS qualified and fully insured
Established 2008*

- Garden design and consultation
- Regular lawn care - cutting, strimming & edging
- Hedge cutting & shaping
- Shrub planting & pruning
- Flower border set up & maintenance
- Garden clean-ups & makeovers
- Pressure washing - patios & pathways
- Fencing & repairs
- General handiwork

For complete & professional garden care:

2 Woodfields, The Street, Assington
T: 01787 212394 M: 07733 134789
fred.kempson@gmail.com
www.kempson-gardenservices.co.uk

PILATES CLASS

TUESDAY

ASSINGTON VILLAGE HALL

7.00-7.45PM

£9 PAY AS YOU GO

£32 FOR 4 CLASSES (£8 PER CLASS)

Please bring your own mat

CONTACT:

annacclayton@hotmail.co.uk

50% donated to the Assington church tower project



Stoke By Nayland C of E Primary School and Nursery



Small class sizes
Specialist teachers
Forest school



Wrap around childcare

Wide range of after school clubs

Make an appointment to see our amazing school.
 Telephone 01206 262418 or Email admin@sbn.suffolk.sch.uk



ASSINGTON PARISH COUNCIL

assingtonpc@yahoo.com

Matters of Interest discussed during a meeting held in Assington Village Hall on **Monday 2nd June 2025**

■ **Present:** Councillors Simon Thorogood, Andrew Hill, Tony Howcroft, Bronwen Stacey, David Wiles and Helen Wallace

In attendance: Christine Hargan (Clerk) and one member of the community.

■ **Election of Chairman and to receive Declaration of Acceptance of Office**

Following a brief discussion it was resolved that Cllr Simon Thorogood would act as Chairman and the Declaration was duly completed and signed

■ **Apologies** for absence: DCllr Lee Parker, CCllr James Finch

■ **Declaration of Interests and requests for dispensation**

Cllr Hill declared an interest in Planning Application no

DC/25/01380 being resident and applicant at the property.

■ **County and District Councillor reports and public forum**

No bespoke reports were received but the following show the latest news for both district and county councils [News »](#)

[Babergh Mid Suffolk](#), [Council news - Suffolk County Council](#)

Public forum: The Chair welcomed 2 members of the public who did not wish to raise any concerns.

■ **Planning:**

Planning applications:

- **DC/25/01380** Squirrel House The Street Assington Sudbury Suffolk CO10 5LJ Erection of a two storey rear extension. Proposed cart lodge with home office (following demolition of existing garage). Resolved no comment
- **DC/25/02272** 3 Orchard Road Assington Sudbury Suffolk CO10 5NJ new upvc, glazed roof conservatory Resolved no comment
- **DC/25/01938** Shamrock Farm Marshalls Green Assington Sudbury Suffolk CO10 5LS Application under S73 to vary Condition 2 (Approved Plans and Documents) to allow revised internal layout, roof material, window positions, and use of the west wing as per submitted plans and documents.

Proposed to **Object** quoting from

Neighbourhood plan ASSN 12a and 12f. There was no heritage statement attached to the application as is required in the case of a listed property, and it was agreed that the retention of the thatch was a key feature in the original planning approval which any developer of the property would reasonably be expected to be aware of in advance..

- **DC/25/01944** Shamrock Farm Marshalls Green Assington Sudbury Suffolk CO10 5LS as above listed buildings application Resolved to **Object** as above
- **SCC/0073/25/** Bramford to Twinstead reinforcement order Resolved no comment

■ **Appoint** members to the HR and the Standards Committees Cllrs Howcroft and Stacey

■ **Appoint** representatives to

- Assington Village Charity Cllr Wiles
- Suffolk Association of Local Councils Cllr Stacey

■ **Appoint** members to review Planning applications ahead of meeting Cllr Hill and to add one other when additional Councillors are appointed

■ **Appoint** Councillor to review accounts and AGAR prior to internal audit following a brief discussion it was agreed to postpone decision until another Councillor is appointed

■ To consider the appointment of Heelis and Lodge as Internal Auditor. Resolved to appoint Heelis and Lodge for the 2025-26 internal auditor

■ To consider continued subscription to SALC

Resolved to subscribe

■ **Finance**

■ Consider the Internal Auditor's report as at 31st March 2025 and agree actions on any matters arising The report was considered and it was resolved to hold the Annual Parish Council meeting on Monday May 11th 2026 and to adopt the revised Statement of Internal Control.

- To approve certificate of exemption from external audit for the year ending 31st March 2025 signed
- To approve **Section 1 of the Annual Return** for the year ending 31st March 2025 Signed
- To approve **Section 2 of the Annual Return** for the year ending 31st March 2025 Signed

■ Receive the RFO report.

Acknowledged

■ Reconciliation of accounts against budget

Acknowledged

• Hartleys: following discussion the two Greens will be planted in Autumn and as part of the work the small trees/shrubs on Threeways will be removed to avoid them obscuring signage. A new contract from the contractor which formalises the additional work on maintaining footpaths has been provided, it was agreed to accept the contract but to review the workload next year in line with budgetary control

■ **Review any issues raised for the Licensed Path, Footpaths and APC's Assets**

- A footpath warden is still being sought.
- Clerk was asked to report the following to Suffolk County Council the signs on
 - Rose Green turning to Arger Fen
 - Dorking Tye turning – place directions sign has fallen
 - Assington Lane/Hagmore Green road National Speed limit and quiet lane signs adjacent to A134 (previously was blocking road)
- Clerk was asked to discuss concerns of parishioner regarding signage pointing toward Assington on the A134 from Colchester to Sudbury direction with CCllr Finch and to respond to the parishioner
- Clerk to discuss whether an application from the Central CIL pot for accessible gates providing entry to the Thicks for people with disabilities would be worthwhile

■ **Consider Councillor Training with SALC if required**

None currently required but would be reviewed when additional councillors are appointed

■ **Councillor recruitment**

Two potential Councillors were discussed and the interest will be followed up

■ **Projects to consider for CIL expenditure**

- Installation of wheelchair accessible gate adjacent to Assington Thicks main access gate approx £2000. Clerk to enquire whether it is suitable for central CIL funding
- Quotation has been received from Mortimer Contracts for resurfacing the permissive footpaths. Following discussion dates on the permissive agreement were checked and Cllr Howcroft agreed to enquire whether land ownership had changed. it was agreed that Due Diligence should be followed, and therefore alternative quotations sought – It was agreed in principle to use CIL money, Clerk to email the agreement to Cllr Howcroft and also to investigate the contractor who completed previous work in the village and contact him. Cllr Wiles agreed to meet the contractor on site.

• **Questions to the Chair**

- Cllr Hill reported that the Asset of Community Value on the Shoulder of Mutton pub should be in place in about 10 days time. The Councillors were concerned about the future of the pub; the village, not least through the neighbourhood plan consultation, has stated the importance of the pub to the village community and that should do anything reasonably possible to support its continuing. It was agreed to offer support to the current tenant or owners.
- Neighbourhood Plan review needs to be kicked off. Cllr Hill to approach consultant for a discussion and to seek costings.
- Cllr Howcroft queried the start time of the meetings and asked if it could be revised to 7pm in the future. Agreed

■ **Time date and place of next meeting** Monday 28th July to be held in Assington Village Hall at 7.00pm.

■ The meeting was closed at 9.24pm

BOXFORD OPEN GARDENS 2025

from Jeff Stacey

The Editor and I went to the Boxford Open Gardens on 1st June. The event started at 11:00, but as we were unable to get there until after 12:00 we decided to have some refreshments at the White Hart before starting. We had not been in there for a while and it is now divided into two sections as you enter, with a cafe to the left and a bar to the right. We headed for the bar and ordered a drink and some bar snacks. Realising that they were very busy and there was likely to be a delay, I decided to go to the Church to pay for our entry to the gardens and obtain the map and garden details. We could then look at them whilst waiting for our food. At the church there was a choir singing, one of a series of musical performances during the day. I returned to the White Hart to eat lunch. It was a hot and sunny day, although I was surprised at the amount by which my drink had evaporated, Bronwen insisted she had only had a couple of sips.

We started our tour of the gardens opposite the church, going through an archway to access a series of garden areas. The guide had indicated that the garden was "bigger than you think" and this was the case. After the more formal gardens we crossed over the River Box and found ourselves in a large field. There was some tree planting but the field had been largely left to rewild, with mown paths by which to get around.

At the far corner of the field was a gate which led into an even bigger field. This was Primrose Field, a wild flower meadow that had been purchased and added to the garden.



We continued our tour by heading up Swan Street. There were a series of houses that had opened their gardens with a variety of surprises as we headed through arches and alleyways. Some were small, intimate spaces, whilst other opened out behind the gardens of others to give access to the river and enable views back to the Church. There were a combination of cottage gardens, some wilder than others plus formal layouts.

An example of one of the formal gardens was one landscaped in 2022 which, in a modest plot, has managed to incorporate a formal lawn with box and lavender, a flower garden with a focus on scent



By contrast, the next door house had a small and most attractive courtyard garden, with a view of the church tower and spire. We came away thinking that this size of garden is all one needs: some comfortable areas to sit and catch the sun at various times of day. The planting was delightful.



and even a row of pleached hornbeams. The Tudor inspiration is completed by a Black Hamburg vine, grown from a cutting taken from the Great Vine at Hampton Court.

In Homefield we admired a magnificent crop of sweet peas and listened to tips on how to get

so many blooms early in the year (start the seeds in July in the tubes from toilet rolls, plant them out in September so they are established for the following year). The owner kindly cut us a posy of sweet peas to take away. These were returned to the relative cool of the car boot whilst Bronwen took a break at the Box River Cafe. She decided against the Champagne and oysters on offer and went for a glass of French rose.



Butchers Lane had a couple of contrasting gardens open. The first featured its own garden pub, serving Pimms and sangria, which promoted a very convivial atmosphere for the visitors. The next garden was a contrast with much more hard landscaping with curving paths and raised beds at different levels. Open for the first time this year and clearly the result of much hard work.

The gardens in the village centre closed at 4:00, but others further afield were open until 5:00. We got in the car and headed out on the road to towards Edwardstone.

Again there was a contrast in styles. On one side of the road a compact garden in a small development of houses, that still managed a small fruit and vegetable patch. On the other side a large open garden with views over the Suffolk Countryside taking in both Groton and Boxford churches.



Out of both time and stamina we returned home having seen many, but not all of the 22 gardens that were open, helped on (or perhaps hindered?) by sampling a few of the refreshment stops. There was much to do and see for the day and all within a few minutes' drive from Assington.



Peter Robb

PAINTING, DECORATING,
FURNITURE PAINTING AND
PAPER HANGING SERVICE

Interior & Exterior

T: 01787 379778

M: 07941 463104

E: sudders1234@gmail.com

See examples of my work on



BRYN HURREN

*Specialist in
Handmade Traditional
Furniture*



Est. 1975

**Bespoke Kitchens, Joinery
and
Handmade Furniture
Made to Order**

Free Quotations

**Tel: 01787 210854
Mobile: 07771 508348
www.barnworkshop.co.uk**



**Sudbury
Physiotherapy Centre**
& Complementary Health

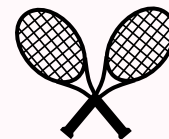
- Musculoskeletal
- Neuro-Physiotherapy
- Sports Therapy
- Podiatry
- Pilates
- Sports Massage
- Clinical Hypnosis
- Shiatsu

Appointments available Monday - Saturday

Tel: 01787 378178

**Email: sudburyphysio@hotmail.co.uk
www.sudburyphysio.co.uk**

17 Gaol Lane • Sudbury • Suffolk • CO10 1JL



PAY AS YOU GO

**NEWTONS FARM
INDOOR TENNIS**

OPEN 7AM TO 10PM
WISSINGTON, CO6 4LX
1 MILE FROM NAYLAND

**£18/HOUR
BOOK ONLINE**

WWW.INDOORTENNISCOURT.CO.UK

BOXFORD & DISTRICT BOWLS CLUB

From Roz Mortlock

We are off to a good start this season with competitions being played and good results from many matches against other Clubs. Our Federation Team have had great results in the knock-out tournament of the National Federation Durham Centenary Trophy and are now off to Spalding for the quarter finals. And our Ladies Team are in the semi-finals of the Hadleigh Cup and the Top Team competition (Suffolk Bowls England). Good Luck to these teams in their next round. Individual members are also doing well in various County competitions and again, we wish them continued success.



CRAFT FAIR

Our Social Committee are organising a Craft Fair on Saturday 19th July from 9.30am to 12.30pm at the Boxford Bowls Club. There will be various craft stalls including decorative glass, wood turning, crochet and paintings - and there will also be stalls selling cakes, plants and books. Do come along and have a look - admission is free and refreshments will be available.

And some of our members will be playing bowls so you can see what it's all about. Car parking is accessible from Homefield, Boxford - take the footpath from the car park down towards the White Hart and you will see the Club on the right hand side halfway down.

NEW OPENING HOURS FOR SUDBURY MAIL DELIVERY OFFICE AT CHURCH FIELD ROAD, SUDBURY

If you arrive home to find that a parcel could not be delivered to you, and you have to go and collect it yourself, the opening hours for collecting are very much reduced. Please note the current Delivery Office opening hours, which don't appear to have been widely publicised.

At least they do have customer parking just outside the office, if the road outside is full of parked cars.



ASSINGTON RAINFALL AND TEMPERATURES

Bob Cowlin (temperatures) and Bill Milner (rainfall)

HISTORY annual rainfall:

2016	599.5	2019	597	2022	419
2017	571	2020	636	2023	662
2018	559	2021	582.3	2024	620

2021	mm	max	min
JAN	89	10°C	-5.5°C
FEB	34	14°C	-7°C
MAR	26	20°C	-3°C
APR	1	15°C	-5°C
MAY	78.1	25°C	-2.5°C
JUNE	55.2	30°C	+3°C
JULY	72	28°C	7°C
AUG	29	24°C	5°C
SEP	28.5	27°C	3°C
OCT	74.5	18°C	1°C
NOV	27	13°C	-3°C
DEC	68	12°C	-6°C

2022	mm	max	min
JAN	7	12°C	-6.5°C
FEB	46	13°C	-4°C
MAR	29	18°C	-2°C
APR	9.5	22°C	-6°C
MAY	37	25°C	0°C
JUNE	33.5	30°C	2°C
JULY	5	36.5°C	6°C
AUG	11.5	32°C	7°C
SEPT	25	25°C	1°C
OCT	63	18°C	0°C
NOV	107.5	14°C	-2°C
DEC	45	10°C	-9.5°C

2023	mm	max	min
JAN	41	10°C	-7.5°C
FEB	3	14°C	-7°C
MAR	78	15°C	-6.5°C
APRIL	65	18°C	-2°C
MAY	19	22°C	1°C
JUNE	15.5	30.5°C	6°C
JULY	72.5	28°C	8°C
AUG	65	29°C	4°C
SEP	41.5	30.5°C	5°C
OCT	137	23°C	-2°C
NOV	61.5	11°C	-7°C
DEC	63	11°C	-3°C

2024	mm	max	min
JAN	47	9°C	-7°C
FEB	95	9°C	-1°C
MAR	38	18°C	-4°C
APR	49	18.5°C	-3°C
MAY	83.5	25°C	3°C
JUNE	17.5	28°C	2°C
JULY	84.5	30°C	4°C
AUG	17.01	30.5°C	5°C
SEP	66	26.5°C	-0.5°C
OCT	53.5	19°C	-2°C
NOV	41	14°C	-4°C
DEC	28	10.5°C	-2.5°C

2025	mm	max	min
JAN	39	9°C	-9°C
FEB	32	13°C	-6°C
MAR	5	18°C	-7°C
APR	25	26°C	-2.5°C
MAY	14	27°C	-0.5°C



RICHARDSON LANDSCAPES

We are a local, family-run landscapers. We specialise in laying natural stone paving and other aspects of hard landscaping.

Check our website or social media for examples of our work and get in touch to see how we could bring your project to life.

01206 241 863

www.richardsonlandscapes.co.uk



Accredited Member



FORMERLY NAILS BY GRACE

I'm Grace Crimmin, a fully qualified Beauty Therapist with over 10 years' experience in Salons and Spas.

I offer a wide variety of treatments from my treatment room in Newton, including Body Massages, Facials, Manicures, Pedicures, Waxing and more!

I look forward to hearing from you.

www.beauty-bygrace.co.uk

07484 648932



Private Day Nursery

for children from 2 years.
Forest School Sessions.

Holiday Clubs

for children aged 4-8

Baby Classes (intro offers available)

sing and sign, baby massage,
baby sensory and
woodland babies
(term time only)



WWW.WOODLANDSNURSERYKERSEYMILL.CO.UK

SING with us!

Wednesdays 7pm, Sudbury
Salvation Army Hall

Thursdays 6.30pm, Assington
Village Hall

No auditions - just come and sing

First Session Free - booking essential

Register now at
www.happysounds.co.uk



CLUBS & ORGANISATIONS (useful numbers)

If your club or organisation is not listed here and you would like to be included, then please let me know on 01787 210354 or email bronwenstacey@btinternet.com

Allotments Secretary	Karl Debenham <i>The new Chair is Bryn Hurren</i>	07584 996211
Assington Baby and Toddler Group	Rev Tricia Box	07747 124592
Assington Books, Village Hall (see post office for times)	Michelle Bourner	07954 221773
Assington Farmshop	Maxine Gardiner	01787 211610
Assington Post Office, Village Hall	Mon 1.30-3.30, Wed 9-12	
Boxford CEVC Primary School (office@boxford.suffolk.sch.uk)	Head: Emma Lea	01787 210332
Brownies, Boxford	Moira Grant	01787 211513
Church - Treasurer (treasurerassington@parishchurch.co.uk)	Tony Hufnagel	
Churchwarden	Bronwen Stacey	01787 210354
Community Choir	Nettie Osman	07957 394780
County Councillor (james.finch@suffolk.gov.uk)	James Finch	01473 264993
District Councillor (Assington)	Lee Parker	07970 196884
Doctors surgery – Sudbury	Hardwicke House	01787 370011
Doctors surgery – Bures	Bures	01787 227529
Floodline 24/7	SCC Flood Management	0345 606 6171
Footpath Wardens		
Horticultural Society	Karen Wiles	
Member of Parliament (james.cartlidge.mp@parliament.uk)	James Cartlidge	020 7219 4875
Mobile Library - Vicary Estate Junction	Saturday 12th July	3pm - 3.30pm
Parish Council	Simon Thorogood	01787 227400
bronwenstacey@btinternet.com	Bronwen Stacey	01787 210354
david.wiles@live.co.uk	David Wiles	07811 108702
tony@howcroft.net	Tony Howcroft	
andrewpeterhill@hotmail.com	Andrew Hill	01787 827112
Parish Council - Clerk (assingtonpc@yahoo.com)	Christine Hargan	01449 674727
Pub – The Shoulder of Mutton		01787 210334
Stoke by Nayland C of E Primary School (admin@sbn.suffolk.sch.uk)	Head: Mrs Kelly McGrath	01206 262418
Vicar (vicar@parishchurch.co.uk)	The Revd Daniel Whiffin	07309 947039
Village Hall – Bookings	Karen Wiles	07983 002072
Village Hall - Caretaker	Sean Mills	07547 190948
Village Hall - Charity Secretary		
Womens Institute, Boxford (annie-phillips@hotmail.co.uk)	Annie Phillips	01787 211729

The Assington News is a community magazine funded primarily through adverts and donations, for which we are always most grateful. **ADVERTS. RATES pa : £20 for 1/8 size page advert, £35 for 1/4 page advert, £60 for 1/2 page advert, £120 for a full page advert. Contact Bob Cowlin 01787 229955 Bank Account details for payments and donations: Account no: 01345159. Sort Code: 30 - 98 - 31. Please make cheques payable to the Assington Association.**

The ASSINGTON NEWS NOW IN COLOUR ONLINE at <http://assington.onesuffolk.net/assington-news/>

Editor	Bronwen Stacey, 01787 210354, email bronwenstacey@btinternet.com
Treasurer	Bob Cowlin, 01787 229955, bob.cowlin@assingtonmill.com
Distributors	David & Ann Jarrett, Judy Bourner, Bryn Hurren & Lisa Brooks, Zoe Laughton, Sue Taylor, Jacqui Egglestone
Printer	Indigo Ross Design & Print Ltd, Sudbury 01787 880 260 hello@indigoross.co.uk
Auditor	Ian Clark, 01787 211133



THE FOXES DEN

KITCHEN AND ROOMS

eat • drink • sleep • relax

- The perfect place to host your special event - we can offer exclusive hire with a range of packages
- Private car park, 5 double en suite bedrooms plus 1 self contained lodge with private hot tub and patio area overlooking the countryside.
- Serving homemade breakfast, brunch, lunch and cakes, delicious coffee and we now have our alcohol license so join us for a drink on our terrace!



Opening Times

Tuesday to Friday - 8:30am to 3:00pm

Saturday - 09:30am to 2:00pm

Sunday - 9:30am to 12:30pm

www.thefoxesdenassington.com

FB : The Foxes Den Assington

IG: thefoxesden.assington

T: 01787 703 500

