

ASSIGNMENT

NEWS



OCTOBER 2025

Wardale Williams

THE OPTICIANS

INDEPENDENT • EXPERIENCED • PROFESSIONAL

Qualified and caring NHS opticians
for you and your family since 1947.
Varifocal specialists.

50 Gainsborough St Sudbury
CO10 2ET 01787 372492
www.wardalewilliams.co.uk



Boxstore

**The Local
Self Storage
Company
For all domestic and
business needs**

**See website for details
www.boxstore.co.uk
tel : 01787 210350**

THE LLOYDS TOUR OF BRITAIN IN ASSINGTON

The photograph on the front cover this month was taken by Peter Dakin, as we all stood in the pouring rain at various points along the A134 as the cyclists and, it seemed, almost as many Police escort riders on motorbikes, passed by in a flash. (Photographs on this page by Jeff Stacey).

The Lloyd's Tour of Britain cycle race started in Woodbridge on the 2nd September with the first stage heading out to Southwold.

Babergh and Mid Suffolk hosted the second stage of the Lloyds Tour of Britain Men on Wednesday 3rd September, which started and finished in the market town of Stowmarket. This was the first time that a stage of the Lloyds Tour of Britain Men has started or finished in the Babergh or Mid Suffolk districts.

After starting in Stowmarket, the route took them through some picturesque countryside (had they had the opportunity to look up, or the good weather to make that possible!):

travelling, out north of Framlingham, with the race sprint in Stradbroke, then looping round towards, but not into Bury St Edmunds, through Cockfield and Lavenham to touch the outskirts of Sudbury and down the A134, before passing Assington on Further Street just after 2:00pm.



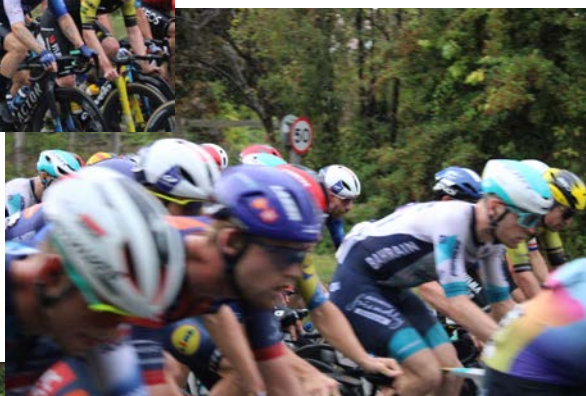
After umpteen support vehicles a 'breakaway bunch of four cyclists passed by, and then very shortly afterwards the rest of them flashed by, the rolling roadblock accompanying them.

"Our" stage was won by Olav Kooij, a Dutch rider for the Visma Lease a Bike team.



The race finished on 7th September in Wales, a fitting goodbye to Geraint Thomas in his last professional race.

The event was won by Romain Gregoire of France, riding for Team Groupama-Fdj.

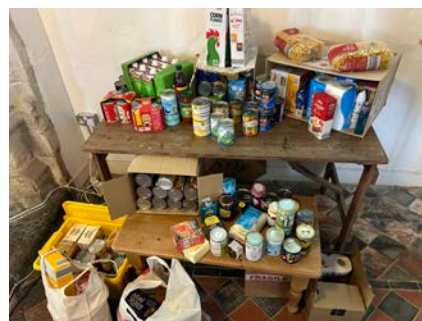


ASSINGTON HARVEST FOOD COLLECTION



Our Harvest Service will take place in St Edmund's Church at 10.30am on Sunday, 19th October. As always, the church is beautifully decorated with the fruits of harvest, seasonal flowers and foliage. Please do join us for this annual celebration; contributions from children (and adults too!) are accepted at the front of the church at an appointed stage in the Service.

We are so very lucky to live in Assington: we have a lovely, caring community, and beautiful countryside around us, and nature on our doorstep. Our local farmers work very hard throughout the year, battling the many foibles of the weather and everything else life throws at them.



However, some people living close to us are not so fortunate. Over the last couple of years the cost of living has increased, and consequently the demand for food from families struggling to make ends meet has increased greatly.

As we now have a local 'Foodbank' outside the Village Hall, where food etc items may be placed, to be shared by people who are not so financially secure, it is appreciated that some of us are already donating foodstuffs at a very local level, both in Assington and at local superstores in Sudbury, on a regular basis.

In addition, every year, here in Assington, as part of the celebration of another Harvest, we collect food donations, for delivery to the Storehouse Foodbank, which is run by the Vineyard Church in Sudbury.

Currently the list of items which they need are as follows:

Tinned Meals:		
Chicken Curry	Rice Pudding	
Chicken in White Sauce	Tin Custard	
Stewed Steak	Tin Fruit	
Chilli Con Carne		Tin Sweetcorn
Minced Beef and Onion		Tin Carrots
	Tin Potatoes	Tin Peas
Tin Hotdogs		Tin Tomatoes
Tin Ravioli	UHT Milk	
Tin Mac n Cheese		

If you are able to donate such items, **we should be most grateful if you would bring them along to the Harvest Service in Church. We very much hope and look forward to seeing you then.**

Not only do the donations make a lovely 'modern day' equivalent to the more traditional fruit and veg box of our childhood, but they also demonstrate our celebration and giving thanks for the harvest which gives us our supply of food throughout the year; they also make such a difference to the lives of others, which of course is the true spirit of the reason we do this.

If you are not able to join us at the church service, but wish to donate items to our Assington Collection for the foodbank, **there will also be a collection box in the village Farm Shop until Saturday, 18th October, and a collection table at the back of the hall at the Harvest Supper on Friday 17th October**

Thank you all so much in advance for your continuing generosity.

KEMPSON GARDEN SERVICES

*All year round, friendly & reliable service
RHS qualified and fully insured
Established 2008*

- Garden design and consultation
- Regular lawn care - cutting, strimming & edging
- Hedge cutting & shaping
- Shrub planting & pruning
- Flower border set up & maintenance
- Garden clean-ups & makeovers
- Pressure washing - patios & pathways
- Fencing & repairs
- General handiwork

For complete & professional garden care:

2 Woodfields, The Street, Assington
T: 01787 212394 M: 07733 134789
fred.kempson@gmail.com
www.kempson-gardenservices.co.uk

PILATES CLASS

TUESDAY

ASSINGTON VILLAGE HALL

7.00-7.45PM

£9 PAY AS YOU GO

£32 FOR 4 CLASSES (£8 PER CLASS)

Please bring your own mat

CONTACT:

annacclayton@hotmail.co.uk

50% donated to the Assington church tower project



Stoke By Nayland C of E Primary School and Nursery



St Edmundsbury and Ipswich
Diocesan Multi Academy Trust

Small class sizes
Specialist teachers
Forest school



Wrap around childcare

Wide range of after school clubs

Make an appointment to see our amazing school.
Telephone 01206 262418 or Email admin@sbn.suffolk.sch.uk



THINGS TO DO



'Last Tuesday'

Coffee and Chat
in the Village Hall

The next meetings will be on
Tuesday
28th October
at 10am.
See you there!

Craft Fair

Sunday 5th October
at **Whatfield Village Hall**
Rectory Road, **SAT NAV IP7 6QU**

10am - 4pm

HOT & COLD REFRESHMENTS
SERVED ALL DAY

Lots of stalls selling a wide variety of crafts
Come along, bring your friends and family
Shop for Christmas, birthdays or just treat yourself

BUMPER RAFFLE - lots of great prizes!

All proceeds to -  **Success AfterStroke**
Registered Charity No. 1211565

Assington Baby & Toddler Group

Mums, dads, grandparents, carers and childminders living in and around Assington. Bring your little ones to a friendly, accompanied babies and toddlers group in the lovely, airy Village Hall

11 and 18 September
9 & 23 October, 13 & 27 November, 11 December
8 & 22 January 2026, 12 & 26 February,
12 & 26 March, 23 April, 14 May,
11 & 25 June, 9 July, 10 September

Thursday twice a month in termtime
from 9:30-11.00 am, at £3 per family

Rev'd Tricia Box - 07747124592



ASSINGTON CHURCH HARVEST SUPPER

This year's Supper will be held at
the Village Hall on

Friday 17th October 2025

Doors open at 7pm for a 7:30 start Tickets:
Adults £8.50 Child (under 16) £4.00
(Deadline to purchase tickets Wednesday
15th October for catering purposes)

Everyone is welcome. A good opportunity to
socialise with others from the village.

Tickets available from:

Linda & Roger	Val & Ian
The Old School House,	'Skimbles'
The Street	The Street

Nayland with Wissington Community Council's

BONFIRE AND FIREWORKS

NOVEMBER 5TH

NAYLAND VILLAGE HALL

Limited parking in village - Please walk if you can
Disabled parking only at Village Hall CO6 4JH

TICKETS IN ADVANCE from www.naylandevents.org

★ Adults £8 - Children £3 - Family £18 ★
Tickets on gate (subject to availability): Adults £10 - Children £5

★ HOT DOGS ★ SOFT DRINKS ★ MULLED WINE ★
BEER ★ FISH & CHIPS ★ ICE CREAM ★ CHILDREN'S TREATS

available from 6pm

★ Display by Firework Crazy ★
STARTS 7pm

GUY & BONFIRE after Fireworks
www.naylandcommunitycouncil.org.uk



Peter Robb

PAINTING, DECORATING,
FURNITURE PAINTING AND
PAPER HANGING SERVICE

Interior & Exterior

T: 01787 379778

M: 07941 463104

E: sudders1234@gmail.com

See examples of my work on



BRYN HURREN

*Specialist in
Handmade Traditional
Furniture*



Est. 1975

**Bespoke Kitchens, Joinery
and
Handmade Furniture
Made to Order**

Free Quotations

**Tel: 01787 210854
Mobile: 07771 508348
www.barnworkshop.co.uk**



**Sudbury
Physiotherapy Centre**
& Complementary Health

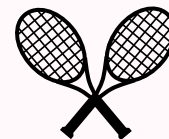
- Musculoskeletal
- Neuro-Physiotherapy
- Sports Therapy
- Podiatry
- Pilates
- Sports Massage
- Clinical Hypnosis
- Shiatsu

Appointments available Monday - Saturday

Tel: 01787 378178

**Email: sudburyphysio@hotmail.co.uk
www.sudburyphysio.co.uk**

17 Gaol Lane • Sudbury • Suffolk • CO10 1JL



PAY AS YOU GO

**NEWTONS FARM
INDOOR TENNIS**

OPEN 7AM TO 10PM
WISSINGTON, CO6 4LX
1 MILE FROM NAYLAND

**£18/HOUR
BOOK ONLINE**

WWW.INDOORTENNISCOURT.CO.UK

THE HORTICULTURAL SHOW

This year's Horticultural Show was a success after such challenging weather yet again.

So many people rallied round and entered some fantastic produce and beautiful flowers. Not forgetting the baking and crafts.

We had 181 entries and a profit of £193.11 which beat the two previous years by £90.00 and £60.00 respectively.

This money has been donated to the Assington Association, to help with the running costs of provision of the free Assington News.

Thanks go to Judy Bourner, Sean Mills, Sue and Geoff Taylor, Tricia Kemp and Ron Volkwyn for their help behind the scenes and on the day.

Thanks also go to Bronwen Stacey for getting the schedule in a suitable format to be printed in The Assington News.

....and Well Done to the show prize winners , who were as follows:

SUMMER COTTAGE SHIELD Most points Veg.
Andrew Warner



WARNER FLORAL BOWL Most points Flowers
Kimberley Howard

HESELTINE CUP Most points all home grown
Andrew Warner

SPRINGFIELD AUTO CUP Most points Home Baking
David Wiles



W.I SHIELD Best Exhibit Home Baking
David Wiles

HEWITT JUNIOR CUP Most points Children
Finley Lewis



ASSINGTON MILL CUP Photography/Painting/Craft
Joan Gilbertson

THE GURDON CAT'S CUP Longest Runner Bean
Andrew Warner



THE BEEFY DECANTER Best effort in show
Andrew Warner

AMOS AND WINIFRED
DIGBETTER DISASTER PRIZE
Andrew Warner

ASSINGTON CHARITY
MILLENNIUM TRAY Best exhibit in the whole show
Andrew Warner

JOHN SMITH CUP Best Allotment
Claire Osbourne



BIGGEST TOMATO AWARD Heaviest
Tomato
Andrew Warner

PROCTOR CUP Best House Plant
Stephanie Gould



Here's hoping that next year will be better again. Do we go for Drought tolerant plants or Bog plants? That is the question !!
Karen x

Our huge thanks go to Karen from everyone who continues to enjoy our traditional events. So very well done: you managed to curate the entire event and still have a beaming smile on your face!

Reminder: the photographs look so much better in colour. You may see pdf copies in full colour of The Assington News at: <https://assington-pc.gov.uk/assington-news/>

THE HORTICULTURAL SHOW



THE HORTICULTURAL SHOW

Thank you to the photographers who took these lovely photos which demonstrate the show in all its glory: Anna Clayton, David Wiles, Tricia Kemp and Linda Britcher.



THE VILLAGE CHURCH FETE



Good news! For the first time we have broken the £3k barrier as our Net Income from the Fete was £3035.31. THANK YOU, THANK YOU, THANK YOU!

Enormous thanks to everyone who helped us to achieve this amount, (which, once again this year will be put towards the church Tower Project, to bring water into the church and install an accessible WC and small scullery facility):

The members of the fete committee who chew it all over and make the plans beforehand;
 the volunteer stall holders who give their time and also prepare the "goods" and donate the prizes for the competitions;
 the family members and friends who generously "muck in" and help out with the happy chaos on the afternoon; in particular Sally Bradshaw and all the family who once again managed the Refreshments from start to finish, and David, Karen Nigel and Scott who brought us a BBQ for the first time, during the fete itself, oh! ...and Kimberly who managed to do it all holding baby Sophie!

Despite the rather too blowy weather, it was a wonderfully successful afternoon and for that we must also thank everyone who came along to support this communal event. Where would we be without you?

We also wish to thank all our generous sponsors who provided the Raffle Prizes, and the kind people who made donations.



THE VILLAGE CHURCH FETE



VILLAGE NEWS

ASSINGTON FOOTPATHS

Some thirty years ago the Parish Council (ably led, as ever, by Simon Thorogood,) decided that something needed to be done to improve the safety on our (largely pavement less) street. Of particular worry was the narrow bit opposite 'Centuries' which people going from the middle of the village to the shop had to navigate.

Buying a strip of land from Christopher Heseltine was no problem (he may have donated it), but negotiation with Suffolk highways was a nightmare. Not just endless letters and phone calls but two visits to Bury and one to Ipswich to meet a ridiculously young lawyer (or was he a student having a laugh??).

Eventually all was done and a SAFE path was constructed which allowed people to reach the shop without need to risk their lives.

Despite the 20 m.p.h. limit many cars/ motor cycles/tractors still belt through the village and it really hurts to see people (even with small children) walking down the middle of the road. I really don't want to have to scrape up the pieces.
John S. (at Centuries).

ASSINGTON BUS SERVICE

The County Council has gained additional funds and are seeking views from the community on the service offered. Currently there is a single bus stop in the village. The Parish Council has been asked to confer with bus users to establish whether, and if so, what changes are required to the existing service. If you would like to respond with your suggestions for improvement to the existing service, a questionnaire has been placed in the bus stop. Please complete the Questionnaire, or alternatively just put your suggestions on a piece of paper and post these through Cllr Hill's door: "Squirrels" The Street.

HAPPYSOUNDS CHOIR NEWS



LONG MELFORD CONCERT TICKETS ON SALE SOON

New term is well under way, and we are delighted to have welcomed several new members in recent weeks! We're looking forward to our Christmas concert at Long Melford Church on Sunday 20th December, (timings tbc at time of going to press) and we have invited Sudbury Sings and the VIP's male voice harmony group as our special guests, to what we're hoping will be the first of many future multi-choir concert collaborations. Tickets will be on sale soon - please email info@happysounds.co.uk to reserve yours. We'll also be performing as a Flashmob in November - watch next month's edition for more details!

Every year we raise around £2000 for local charities. New members are always very welcome - we have branches in Sudbury and Assington - so if you'd like to come and join us, singing pop classics, musical theatre and some a cappella pieces, please go to www.happysounds.co.uk and drop us a line. It's a brilliant way to make new friends, we are a nice bunch and some fantastic friendships have been forged through Choir over the last few years. Come and say hello! First session is free. What better way to spend the colder months, than singing your heart out to fabulous tunes, and making new friends!

NEW TREASURER FOR THE ASSINGTON ASSOCIATION (AKA The Assington News Magazine)

assingtonassociation@icloud.com

After many years of 'balancing the books' of The Assington Association to ensure the continuation of the Assington News magazine, Bob Cowlin has resigned from this role. He persuaded Jeff Stacey to accept the challenge, and Jeff will assume this new position on 1st October.

We must send our heartfelt thanks to Bob for carrying out this activity on behalf of the village over this time, and also to Jeff for taking it on. If you wish to contact the Treasurer please note that there is a new email address specifically for this:

assingtonassociation@icloud.com

As previously, the Bank Account details for payments and donations are:

Account No: 01345159

Sort Code: 30-98-31



On Sunday 10th August, 17 of The Assington Seniors enjoyed a great Strawberry Afternoon Tea at The Foxes Den : lovely

home produced savouries and cake selection and of course the chilled prosecco!

A big thank you Vanessa, Steve and the team for making us feel so welcome.





THE SHOULDER OF MUTTON

- COMING SOON!

Cycling round the Suffolk lanes, there's something that always stands out about certain villages. Some just feel more alive — not just commuter dormitories with a nice view, but proper villages where folk know each other, stop for a natter, and things tick along in an easy, familiar way.

And, in my carefully researched opinion (cycling usually involves a pint or two), the thing that makes all the difference is having a thriving local pub.

The village pub is where people naturally come together, where friendships are made and people share a drink or a meal or just generally sit and enjoy a coffee in the buzzing atmosphere of a public house. In the coming winter months, an evening in the pub also saves putting the heating on, as I like to remind Anna regularly!

It's therefore great news that the Shoulder of Mutton will be bursting back into life very soon, with works already well progressed at time of writing and the outside already looking a treat.

We were all shocked to see the rapid decline in the pub earlier in the year, and it's fair to say it closed in a very sorry state. Thankfully, and with the full backing of the parish council, a brave villager has taken on the tenancy and is working miracles to bring it back to life, pushing through challenges ranging from electrics and decoration to food hygiene certificates.

The pub that reopens will be very different from the sad one that closed; everyone will be welcome and we certainly hope everyone gives it a visit when it opens the doors. It is now very much over to all of us to make it the vibrant heart of the village it always used to be.

Andrew Hill

Assington Parish Council



ASSINGTON RAINFALL AND TEMPERATURES

Bob Cowlin (temperatures)
and Bill Milner (rainfall)

HISTORY annual rainfall:

2016	599.5	2019	597	2022	419
2017	571	2020	636	2023	662
2018	559	2021	582.3	2024	620

2021	mm	max°C	min°C
AUG	29	24	5
SEP	28.5	27	3
OCT	74.5	18	1
NOV	27	13	-3
DEC	68	12	-6

2022	mm	max°C	min°C
JAN	7	12	-6.5
FEB	46	13	-4
MAR	29	18	-2
APR	9.5	22	-6
MAY	37	25	0
JUNE	33.5	30	2
JULY	5	36.5	6
AUG	11.5	32	7
SEPT	25	25	1
OCT	63	18	0
NOV	107.5	14	-2
DEC	45	10	-9.5

2023	mm	max°C	min°C
JAN	41	10	-7
FEB	3	14	-7
MAR	78	15	-6.5
APRIL	65	8	-2
MAY	19	22	1
JUNE	15.5	30.5	6
JULY	72.5	28	8
AUG	65	29	4
SEP	41.5	30.5	5
OCT	137	23	-2
NOV	61.5	11	-7
DEC	63	11	-3

2024	mm	max°C	min°C
JAN	47	9	-7
FEB	95	9	-1
MAR	38	18	-4
APR	49	18.5	-3
MAY	83.5	25	3
JUNE	17.5	28	2
JULY	84.5	30	4
AUG	17.01	30.5	5
SEP	66	26.5	-0.5
OCT	53.5	19	-2
NOV	41	14	-4
DEC	28	10.5	-2.5

2025	mm	max°C	min°C
JAN	39	9	-9
FEB	32	13	-6
MAR	5	18	-7
APR	25	26	-2.5
MAY	14	27	-0.5
JUN	36.5	31	6
JULY	44	33	5
AUG	11.5	30	6

ASSINGTON PARISH COUNCIL

Matters of Interest discussed during a meeting held in Assington Village Hall on **Monday 28th July 2025**

Clerk: Christine Hargan 4 Northfield Road, Onehouse, Stowmarket IP14 3HF –

Telephone: 01449 674727 Email:

PLEASE NOTE A NEW EMAIL ADDRESS FOR THE PARISH COUNCIL: clerk@assington-pc.gov.uk
and

PLEASE NOTE A NEW PARISH COUNCIL WEBSITE ADDRESS:
<https://assington-pc.gov.uk>

■ **Present :** Councillors Andrew Hill (Vice-Chair), Tony Howcroft, Bronwen Stacey & David Wiles.

In attendance: DCllr Lee Parker, CCllr James Finch, Christine Hargan (Clerk) and 2 members of the community.

Apologies for absence: Cllr Simon Thorogood

■ **Declaration of Interests and requests for dispensation**
There were none

25703 Agree **Minutes** of Assington Parish Council meeting held on 2nd June 2025

Minutes were resolved to be accurate and signed by Cllr Hill.
There were no Matters Arising

■ County and District Councillor reports and **public forum**
County Council Report CCllr Finch having previously circulated his report updated the meeting on:

- Bus services. The County Council have gained additional funds and are seeking views from the community on the services offered. Currently there is a single bus stop in the village –the Parish Council need to confer with bus users to establish whether changes are required to the existing service. It was resolved to place a questionnaire in the bus stop as the most logical way to reach current users and request that responses are posted through Cllr Hill's door in order that responses can be distributed to CCllr Finch by the next meeting.
- Solar farms The CC objects to plans for North Suffolk Solar Farms,
- Funding for SEND pupils. There is sufficient additional support for 200 additional spaces for units schools throughout the county.
- A Dementia Marketplace has been held with information to help families and individuals to cope with dementia.
- Safer and Stronger Communities Board have endorsed a strategy for problems related to violence against women and girls marking a shift in attitudes toward personal safety in the home – it is acknowledged that men suffer from domestic violence and also need support.
- Fostering and adoption in the county is now part of East Anglian Group and currently is in need of 150 new foster parents. They are canvassing for additional families initially on a local level.
- National Grid working stations are now active and a local property in Leavenheath under the path of the cables has been compulsorily purchased allowing the elderly residents to move.
- Councillors asked whether a decision had been made on whether Norfolk and Suffolk Police will continue to enforce 20mph speed limits. CCllr Finch agreed to revert on the topic following further investigation. Historically the answer was always that they will if the resource is there. Cllr Wiles to forward the email correspondence from the local Police coordinator to CCllr Finch.

District Council report DCllr Lee Parker

- Local government reorganisation: A decision following consultation with residents will be made before the end of the year as to whether there will be one or multiple unitary councils; it is likely to be a convoluted process. One perceived fear relates to the planning function. It has been confirmed that there

will not be any government funding for developing Neighbourhood Plans. However, there may be an opportunity for funding from Babergh for Neighbourhood Plans that are currently in progress to help with an environmental impact study. It was noted that 95% of planning applications in the district are decided by the planning officer, but despite this, central government were seeking to reduce District Councillors' involvement in making planning decisions.

- CIL continues to be a concern but it does deliver.

Question Government is not changing the weight of NPs in the short term and weight and influence is afforded to those parishes with a plan. The housing targets have not changed at the moment, with Assington's target estimated to be 90 additional homes over 20 years. However, it may be that in the future that more housing is aimed toward the towns and this figure could realistically be considered a maximum one. Every application will be considered using the NP and the Joint Local Plan. Any additional development agreed prior to the commencement of the government figures will not be counted toward the new requirement.

- Cllr David Busby sadly died on the 27th July. The Clerk was requested to record the Parish Council's thanks for his service over the years.

• **Public Forum**

Two members of the public were welcomed and asked the following questions

Why has Google Maps removed the name of Warmingford Road, from the map? The road is now listed as Small Bridge Entry. Cllr Howcroft submitted a request for a correction to Google during the meeting to correct the name.

■ **Planning applications:**

[DC/25/03140](#) Braes Farm Further Street Assington CO10

5LE Application to determine if approval is required for a: Change of Use of Agricultural Units and Buildings to Dwellinghouses . Councillors discussed the detail of the application and saw no conflict with the neighbourhood plan, and so resolved no comment.

[DC/25/02952](#) The Nook The Street Assington CO10 5LW

Discharge of Conditions Application for DC/24/05303 - Conditions 5 (Materials), 6 (Landscaping Scheme) and 9 (Biodiversity Enhancement) Councillors discussed the detail of the application and saw no conflict with the neighbourhood plan, and so resolved no comment.

[DC/25/02903](#) Cotton Wood Barracks Road Assington CO10

5LP Discharge of Conditions Application for DC/21/02579 - Condition 17 (Mitigation Licence for Great Crested Newt) Councillors discussed the detail of the application and saw no conflict with the neighbourhood plan, and so resolved no comment.

[DC/25/03224](#) Aisling House The Street CO10 5LW

Application relating to DC/24/00438 variation of Condition 2 (Approved plans and documents) Councillors discussed the detail of the application and saw no conflict with the neighbourhood plan, and so resolved no comment.

[DC/25/02981](#) 5 Woodfield The Street CO10 5LN

Erection of a Single Storey side extension Councillors discussed the detail of the application and saw no conflict with the neighbourhood plan, and so resolved no comment.

• **Meadow Way**

Whilst the land at Meadow Way was granted planning permission, in part conflicting with the Neighbourhood Plan, Councillors noted that the NP still significantly influenced the development in terms of location, the type of properties built, and the protection of the remainder of the field.

■ **Finance**

- Receive the RFO report.
- Acknowledged Reconciliation of accounts against budget
- Authorised payments made/to be made and noted income received since last meeting

■ Review any issues raised for the Licensed Path, Footpaths and APC's Assets

Resurfacing of the footpaths leading to the Village Hall, it appears that all of the titles to the land on which the footpath stands have been split since the agreement was signed and there is now an indeterminate number of landowners some of whom may not know they potentially own a section of the footpath. It was acknowledged that resurfacing the footpath is still required. Cllr Howcroft agreed to approach the land owners to establish permission between the village hall and the Assington Barn as a starting point.

A footpath warden has been found and gratitude has been expressed to Nettie for taking on the role.

Cllr Wiles will meet with a representative from BDC this week to discuss whether an application from the Central CIL pot for accessible gates providing entry to the Thicks for people with disabilities would be worthwhile and ditto regarding gym equipment to the playing field. Clerk to contact Chair to establish whether he's discussed the matter with the land owner.

■ Neighbourhood Plan review

A Working Party is to be established and will be led for the parish council by Cllr Hill. Following communication with the previous consultant 'Places 4 People' the estimate is that the costs for updating the plan and including site allocations could be between £9,935 and £11,825 +VAT. Given the importance of maintaining an up to date plan in the face of hugely increasing housing targets, it was resolved to initially apportion £10,000 of CIL money to cover these charges. Cllr Hill will commence the project.

■ Shoulder of Mutton

On behalf of the Parish Council, Cllr Hill has been proactive in engaging with a number of parties regarding the pub and it is clear the only way to get it reopened quickly is for a new private tenant to lease the property. However, given the importance of the pub to the village (97% support at the time of the last neighbourhood plan survey) it is necessary to consider what the Parish Council could do if that fails.

Whilst the councillors are very concerned about the future of the pub, it was agreed that consultation with residents was needed to establish the support for any community initiative in running or owning the pub. It was also noted that for a community interest company to purchase or lease the pub, multiple independent valuations of the property would be required, and that any use of public funds to invest in the business would only be justifiable at the level of these independent valuations. Any options along these lines would take a significant amount of time to develop, and it was reiterated that a new private tenant taking on the pub was the best outcome in the near term.

DCllr Parker discussed the legal powers that the District Council has in relation to viable pubs left closed by their owners. It was noted that the pub had already been made an Asset of Community Value and would remain so until 2030, at which point the Parish Council expects that renewal would be sought to 2035 and beyond. It was also noted that the pub has very substantial protections against it being converted to private housing in the neighbourhood plan (which forms part of planning law upon which applications are decided).

Following discussion it was resolved for Cllrs Hill and Howcroft to form a Working Party with the aim of getting the pub up and running again, to gain information on, and if appropriate set up a community interest company for use in the future if needed. Cllr Parker agreed to enquire what if any help could be gained from Babergh District Council and has agreed to provide as much

support as possible. Clerk had already forwarded information and advice from Simon Lanning (BDC Grants Department) and an offer for advice and support from one such business if required.

The Parish Council noted that the recent closure of the pub was of no fault of the owners, and wished to record their thanks to the owners of the pub for their very positive engagement with them throughout this difficult period.

Update since this meeting; it is hoped that a new tenant will be re-opening The Shoulder of Mutton in the coming weeks.

■ Parish Council website

Due to revised legislation, it is now necessary for Parish Councils to have a unique domain. Clerk has established the most economical route to gaining this with the current provider. A ".gov.uk" domain will cost £25, and can be used with the existing hosting package, part of which would include migrating the data from the existing site to the new site. Clerk costed the provision of 8 domain associated email addresses at £192. Bringing the total with hosting domain and 8 email addresses to £258 per year. The domain with hosting and a single associated email address for the clerk will bring the total to £116 per year, although the costs will need to be confirmed with the supplier.

Following discussion, the council resolved to do the necessary in order to comply with legislation and purchase a domain with one email address for the Clerk. All correspondence will in future come via the Clerk and that will be the only email address published for the parish council.

■ Questions to the Chair

The Parish Council wished to record thanks to Mr Braithwaite and his team for their work in clearing the front of the pub.

■ Time date and place of next meeting

Monday **29th September** to be held in Assington Village Hall at **7.00pm**.





The meeting was closed at 20.53 pm



National Grid is upgrading the electricity transmission network between Bramford substation in Suffolk and Twinstead Tee in Essex through the construction of a new overhead line and underground cable route.

We're doing this because the existing network won't be able to reliably transport all the new and low carbon energy we expect to connect to it by the end of the decade.

During the construction phase, we'll keep you informed about ongoing and upcoming works through:

-  **website updates**
-  **writing to those who live near major works**
-  **regular e-newsletters**
-  **keeping your local representatives, including parishes and district county/councillors, informed.**

Register for our e-newsletter



Scan the QR code to sign-up to our e-newsletters.

Find construction updates online



Scan the QR code to read more about current and upcoming construction activity on our website.

Contact us

If you have any questions about our project, you can get in touch by:
Email: contact@bramford-twinstead.nationalgrid.com
Phone: 0800 186 1515 (Lines are open 9am-5:30pm, Monday to Friday)

nationalgrid

SUFFOLK HISTORY AND ARCHIVES: DO YOU WANT TO TRACE YOUR FOREBEARS?

Suffolk Records and Church Registers

Discover Suffolk's past like never before thanks to a new digitisation project between Suffolk County Council's Suffolk Archives and leading family history platform Ancestry.

More than 400 years of the county's rich historical heritage will be at your fingertips from 8 August. Millions of records dating back to 1538 will be available online for the first time, with more additional local-interest records to follow.

Records digitised include full-colour, high-quality digital images of parish registers from across the Diocese of St Edmundsbury and Ipswich.

They include key historical moments like the 1776 baptism of the artist John Constable and the 1846 burial of abolitionist Thomas Clarkson.

Until now, these baptism, marriage, confirmation, and burial records were only available on microfiche or in-person.

Access will be free at The Hold in Ipswich – the home of Suffolk Archives and at Suffolk Libraries.

Viewing from home will require an Ancestry subscription. Royalties will be used to support archive services.

The project has helped preserve fragile historic documents by reducing wear and tear. Suffolk Archives were also able to carry out conservation checks during the scanning process.

This project is a fantastic step forward in making Suffolk's rich history more accessible. Whether you're overseas, have mobility challenges, or simply prefer to research from home, these records are now just a click away.

By digitising these documents, we're not only preserving them for future generations but also helping people reconnect with their heritage.

Ancestry is known for its expertise in digitising genealogical records and its global reach, processing over one billion searches monthly. It's successfully partnered with numerous UK local authority archives over the past 15 years.

Simon Pearce, family history expert at Ancestry said: "Ancestry's digitised collections now exceed 65 billion records, meaning the possibilities to research ancestors

around the globe continue to expand. Collections such as this important set of records from Suffolk will help us discover more information about the key events in our ancestors' lives and help to fill in the gaps in many family trees with connections to Suffolk. The collection is of huge importance to both the community in Suffolk and people with connections back to this county scattered all over the UK and the globe."

There will be online and in-person how-to use Ancestry beginner sessions following the launch. These will be bookable online at suffolkarchives.co.uk.

About Ancestry

Ancestry, the global leader in family history, connects everyone with their past so they can discover, preserve, and share their unique family stories. With our unparalleled collection of more than 65 billion records, over 3 million subscribers and over 27 million people in our growing DNA network, customers can discover their family story and gain a new level of understanding about their lives. Over the past 40 years, we've built trusted relationships with millions of people who have chosen us as the platform for discovering, preserving and sharing the most important information about themselves and their families.

About Suffolk Archives

Suffolk Archives is home to 900 years of history, captured through millions of items, many of which are of national and international significance.

The Hold, on Ipswich Waterfront, first opened to the public in September 2020 and was officially opened by His Royal Highness the Duke of Gloucester in September 2021. The £20million building is a partnership between Suffolk County Council and the University of Suffolk.

SUCCESS AFTER STROKE AT THE STEVENSON CENTRE

The annual Charity Craft Fair returns to Whatfield in October with a wide range of crafts, gifts, refreshments and a bumper raffle which gets bigger every year! Don't miss this great opportunity to shop early for Christmas, enjoy a tasty bacon roll and homemade cake, maybe win a prize and help support a very worthwhile cause.

All proceeds will go to Success After Stroke, a local charity established 25 years ago to support those who have suffered a life changing crisis.

SAS provides Speech and Language, Physio and Well Being therapists to help stroke survivors rebuild their lives and regain their confidence.

The Group meets three times a week at the Stevenson Centre in Great Cornard and subsidises events such as Art classes, sailing days, meals out, BBQs, an annual Pantomime and other entertainment trips.

SAS receives no official funding and relies entirely upon donations and fundraising events such as the

Craft Fair.
Everyone welcome between 10-4pm
on Sunday 5th October at
Whatfield Village Hall, Rectory Road, IP7 6QU.



PARISH CHURCH NEWS



<https://www.assingtonchurch.org.uk>

Letter from the
Rev Daniel Whiffin,
Vicar of Bures with Assington
and Little Cornard



Dear friends

I write to you surrounded by treasures—though, I confess, not everyone would see it that way. Some may call it clutter; I prefer “curated nostalgia.” Despite the recent rise in “decluttering” evangelists, I just can’t seem to catch the bug. Really, I’m sure it would be better if “tidying” were not a constant item on the to-do list. And who wouldn’t want to open a cupboard without risking a mild concussion from a tumbling Tupperware avalanche? But, what if one day I need that instruction manual and charger for the phone I haven’t owned since the time the world was worried about the Millenium Bug (or perhaps my Nokia 3310 is still in a drawer here somewhere!)? Apparently, I’m a hoarder, you see—from a long line of hoarders. My father, like his father before him, requires multiple sheds for ephemera the house can’t contain.

Perhaps there is a psychological explanation for my tendencies. Maybe, deep down, it’s about security—the comfort of knowing that, no matter what the world throws my way, I am equipped with a lifetime’s supply of rubber bands and three copies of *Knowing God* by J.I. Packer (it’s a great book, by the way). I should know better really... Jesus’ Parable of the Rich Fool is a warning against the perils of being secure in our stuff instead of our Father God’s careful provision. Do you know it? If not, search for “Luke 12:13–21”. Is it ok just to say, “It’s in my genes!”?

So, to the de-clutterers and the home organisers, I tip my hat—no doubt rescued from a charity shop in 2008. May your shelves be ever sparse, your cupboards calm, and your hearts unburdened. But spare a thought for those of us who just can’t escape the chaos, who cherish the neglected and the nearly-forgotten. For in every hoarder, there lives a hopeful archivist, intent on saving the world, one spare button at a time.

Yours, with a mountain of miscellaneous affection,
Daniel

ASSINGTON CHURCH

SERVICES in OCTOBER



5 October @ 10.30am HOLY COMMUNION

12 Oct Bures @10.30am Holy Communion
12 Oct Little Cornard @10.30am Morning Worship

FRIDAY 17th @ 7.30pm HARVEST SUPPER IN THE VILLAGE HALL.

**19 October @10.30am HARVEST SERVICE
please do join us in church**

26th Oct Bures @ 10.30am Morning Worship
26th Little Cornard @10.30am Holy Communion

THE CHURCH IN ASSINGTON IS OPEN FOR VISITORS

**ON SATURDAYS AND SUNDAYS,
and at other times by arrangement with key holders:
Bronwen Stacey 01787 210354
John Symons 01787 211534**

HARVEST FOODBANK COLLECTION

every year, here in Assington, as part of the celebration of another Harvest, we collect food donations, for delivery to the Storehouse Foodbank, which is run by the Vineyard Church in Sudbury. Currently the list of items which they need are as follows:

If you are able to donate such items, **we should be most grateful if you would bring them along to the Harvest Service in Church. We very much hope and look forward to seeing you then.**

Tinned Meals:	Rice Pudding	
Chicken Curry	Tin Custard	
Chicken in White Sauce	Tin Fruit	
Stewed Steak		Tin Sweetcorn
Chilli Con Carne		Tin Carrots
Minced Beef and Onion		Tin Peas
	Tin Potatoes	Tin Tomatoes
Tin Hotdogs		
Tin Ravioli	UHT Milk	
Tin Mac n Cheese		

These donations make such a difference to the lives of others, which of course is the true spirit of the reason we do this.

If you are not able to join us at the church service, but wish to donate items to our Assington Collection for the foodbank, there will also be a collection box in the village Farm Shop until Saturday, 18th October, and a collection table at the back of the hall at the Harvest Supper on Friday 17th October

Thank you all so much in advance for your continuing generosity.

Vicar: Daniel Whiffin 07309 947039
email: vicar@parishchurch.co.uk
Associate Priest :
Rev Simon White 07572 418555
Reader: Dr John Symons 211534
Churchwarden: Bronwen Stacey 210354
Organists: Bronwen Stacey
Peter Dakin
Secretary: Emily Carlidge 07967 724266
Treasurer: Tony Hufnagel



Stay curious. Try Alpha.

Alpha is a series of group conversations that freely explore the basics of the Christian faith in an open, friendly environment. Everyone’s welcome. No matter your background or beliefs, whether you’re new to exploring faith, have unanswered questions, or are simply open-minded about it all, Alpha is for you — you’re invited.

Food, a talk, then conversation. You can say anything you like, or nothing at all. It’s your Alpha, on your terms.

Alpha in Bures
Starting late September 2025
and running through the autumn.
Alpha is completely free — no charge.

Contact Bill and Tricia Box
Tricia 07747124592
Bill 07743801487



ASSINGTON CHURCH HARVEST SUPPER

This year’s Supper will be held at
the Village Hall on

Friday 17th October 2025

Doors open at 7pm for a 7:30 start Tickets:
Adults £8.50 Child (under 16) £4.00
(Deadline to purchase tickets Wednesday
15th October for catering purposes)

Everyone is welcome. A good opportunity to socialise with others from the village.

Tickets available from:

Linda & Roger Val & Ian
The Old School House, ‘Skimbles’
The Street The Street



RICHARDSON LANDSCAPES

We are a local, family-run landscapers. We specialise in laying natural stone paving and other aspects of hard landscaping.

Check our website or social media for examples of our work and get in touch to see how we could bring your project to life.

01206 241 863

www.richardsonlandscapes.co.uk



FORMERLY NAILS BY GRACE

I'm Grace Crimmin, a fully qualified Beauty Therapist with over 10 years' experience in Salons and Spas.

I offer a wide variety of treatments from my treatment room in Newton, including Body Massages, Facials, Manicures, Pedicures, Waxing and more!

I look forward to hearing from you.

www.beauty-bygrace.co.uk

07484 648932



Private Day Nursery

for children from 2 years.
Forest School Sessions.

Holiday Clubs

for children aged 4-8

Baby Classes (intro offers available)

sing and sign, baby massage,
baby sensory and
woodland babies
(term time only)



WWW.WOODLANDSNURSERYKERSEYMILL.CO.UK

SING with us!

Wednesdays 7pm, Sudbury
Salvation Army Hall

Thursdays 6.30pm, Assington
Village Hall

No auditions - just come and sing

First Session Free - booking essential

Register now at
www.happysounds.co.uk



RIDE AND STRIDE REPORT

from Jeff Stacey

This year I planned a route that explored the villages to the north of Framlingham. My starting point was St Peter at Monk Soham. As was typical of a number of the churches I visited, this was outside the village, but close to the Manor House. Looking round the church I noticed monuments to members of the Bazalgette family, one of whom had been the rector for the parish. They were relatives of Sir Joseph Bazalgette, (1819-1891) who, as Chief Engineer of London's Metropolitan Board of Works created the London Main Drainage, the sewerage system in response to the Great Stink of 1858.

I then made the first of many navigational errors of the day, by following signs to Bedfield when I had planned to go to Bedingfield. This was not a complete loss as Bedfield had a delightful church, with interesting internal fittings, including the lower part of a rood screen, complete with its paintings. The nearby Bedfield Hall was very picturesque with a well tended garden. It is open to the public by booking a tour, according to the sign outside. I passed it as I headed out on a track across fields which other cyclists at the church had



said was the quickest way to get me back on track for my next visit at Athelington.

The short cut did help me get in the right area, but the church proved elusive and my map reading poor. I eventually got a signal on my phone and was rescued by the satnav, for the first of several times. I wanted to visit Athelington purely because I like the sound of the name, invoking visions of a Saxon church perhaps? It was not Saxon, but still very interesting. Without the benefit of satnav Cromwell's troops had not been able to find the church and consequently the carved pew ends had not been defaced, and featured many intact figures and fanciful beasts. Now back on my planned route I headed to Wingfield. The



church was linked to the next door Wingfield College, a medieval chantry college of priests. The college buildings are now a private home, leaving what is a large and ornate church for a small village. The church was funded by the De Wingfield and De La Pole dynasties, some of whom have magnificent tombs. I was particularly fascinated by one of the De La Pole effigies who is resting his head on a severed head. Later research explains this is a helm surmounted by the Saracen head crest of the De La Pole family. Made in 1492 it is considered one of the finest examples of a robed Knight of the Garter and his lady.

Also of interest at Wingfield is a rare survival of a late 18th to early 19th Century Hudd, a shelter for the Priest when conducting a graveside service in poor weather.



By way of contrast to the splendour of Wingfield, my next stop was the much plainer Methodist Chapel in Fressingfield. I chatted to the two ladies who were greeting visitors, one of whom was 88 and they told me about the splendour of Huntingfield church, which I added to my itinerary, but went via my planned next stop of Metfield.



I was shown round Metfield church and introduced to it two "treasures". There are mediaeval painting in the ceiling. In the centre boss of the four lowest panels is the Metfield Imp, complete with sticking out tongue, said to be watching over the priest in his pulpit and monitoring what he says in his sermon and keeping him to time. The other treasure is the church tower clock. It is from the 1600s and is possibly the oldest working church clock in the country.



Huntingfield was indeed spectacular. The ceiling was restored and painted in bright colours by the vicar's wife around 1850. Although I had not heard about it before the ride, it is apparently a tourist hotspot, with coach parties going there.

My next stop was Peasenhall. I had expected this to be a larger church than it is, but it still had interesting details like the dragon and wild man above the entrance.



Bruisyard was next. Situated between the vineyards of Bruisyard and Shawsgate. It has a very pretty Lych gate, which was a welcome shelter to rearrange my hastily donned waterproofs to provide better protection against the thunder storm.



My final stop had been planned as the Chapel at Framlingham College, but I was not going to make this before the 5:00 cut off, so I visited the isolated church of Cransford. Small but perfectly formed and with a delightful organ, the size of an upright piano.

I returned to Monk Soham via Framlingham, giving me a final chance to demonstrate my navigational ineptitude with a case of right road but wrong direction. all contributing to a planned 35 mile route ending up as 47.

Thank you to all my sponsors. At the time of writing I have yet to collect the money, but expect to raise over £300. as usual half will go to the Suffolk Historic Churches Trust and half directly to Assington Church.

GRAYHAM HOGGER

Free local delivery

(Baileys, Allen & Page, Dobson & Horrell, Saracen, Naf)

**HORSE/ANIMAL FEED & BEDDING
HAY, HAYLAGE & STRAW
MUSHROOM COMPOST
SHAVINGS & HORSE-FEED
(Large and small bales)**

GRAYHAM HOGGER

TEL: 01787 210074 or 07860 536899

DANIEL ECUYER THATCHERS

MASTER THATCHER

Long straw & water reed

(Free quotes for thatch owners)

Briars, Dyers Lane, Assington

01787 210252 or 07956 585133

ecuyerthatchers@gmail.com

MEADOW GRACE

PLUMBING HEATING BATHROOMS

Plumbing and heating engineer with over 20 years' experience. Providing a friendly, reliable and professional service with an emphasis on high standards of workmanship and conscientiousness.

- Full bathroom suite installation (inc. design and management)
- Boiler installation, replacement and maintenance
- Full heating system installation and upgrade
- Hot water cylinder upgrade and replacement
- Power flushing
- All general plumbing

☎ **Sean: 07983 403 289**

✉ **meadowgraceph@gmail.com**

📷 **instagram.com meadowgraceph**



Essex & Suffolk gliding club are always keen to attract new members. You can start gliding from 13 go solo at 14 and no upper age for seniors, provided you're medically fit.

If interested please visit our website:
www.esgc.co.uk

YOGA WITH LILY

£10 Per session or £40 for 5 sessions

Every Thursday

6:30-7:30pm

The Old Forge, The Street

To book, text or call 07958996766

Boutiqueprint

Wide Format Printers

PVC Banners

Posters

Retail Signage

Wallpapers

Vehicle Wraps

Vinyl Decal

Tel: Assington 212379

Email: duncan@boutiqueprint.co.uk



NATURE WATCH

It would be true to day that we are not surprised to rather too frequently see a dead deer at the side of the road; they often seem to leap out directly in front of one, giving no time for a proper 'emergency stop' and ruining the front of your car in the process.

They are more than often than not a muntjac deer, as there are so many of them in this particular part of the country. Muntjacs are a small deer species native to Asia that was introduced and is now especially common in the southeast of England. Key features include their small size, stocky build, reddish-brown fur, pale underside, and a distinctive "bark" they make when alarmed. As a result of their negative impact on the environment and infrastructure, muntjac deer have been designated as a pest species in Britain, with measures taken to control their populations, included the use of culling programs.



Occasionally it may be a slightly more elegant-looking Roe deer, which bounded out in front of a car one night:



The Roe is a small deer, reddish and grey-brown, and well-adapted to cold environments. A true British native since at least the Mesolithic Age, Roe deer were almost extinct in England, Wales and Southern Scotland by the

18th century, due to hunting, but they are now widespread and common. Roe deer are delicate animals with reddish-brown summer coats, white chins and do not have spots.

Returning from an evening out in Saffron Walden recently we were driving somewhere between Stoke by Clare and Cavendish when it was quite a thrill to see - yes I was awake for a change!- a Fallow Stag deer, with large antlers in a field on

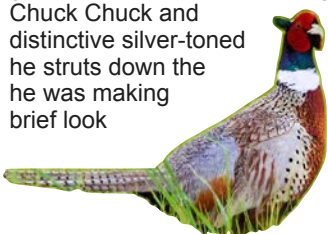


the left; it was standing alone, admiring the night view.

Fallow deer are medium-sized spotted deer with distinctive palm-shaped antlers, a black-bordered white heart-shaped rump, and a characteristic black stripe down their tails (if you get close enough to see it).

Fallow deer have broad, palmated antlers, while roe deer have simple antlers with pointed tips.

In the very dry drought period which has now come to an end with a bang, we had frequent daily visits - indeed several times each day, to our bird bath by "our" pheasant. We usually have a pheasant which comes into the garden regularly to enjoy our 'bird facilities', and over the yers of course the actual pheasant has changed, as old ones die and are replaced by the next generation. We used to give them nick-names, such as Chuck Chuck and Charlie; this one has a distinctive silver-toned back, so we recognise him when he struts down the garden. During the dry weather he was making several visits a day, and after a brief look



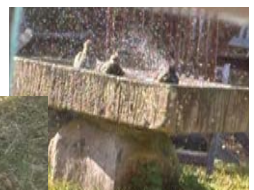
he would hop up onto the bird bath and perch there looking round for a while. Then get down to the business of what he had really come for, which was a drink; our bird bath was probably the only reliable source of accessible water in this area (apart from Assington lake, of course).

It is so very important to provide water daily for the wildlife, because birds in particular will die if they don't manage to find any, but also they will flock to a water source and you will be entertained watching the birds drinking and taking baths: baths are an important part of the life of a bird, as they are able to clean their feathers, remove dirt, dust, and parasites, and to keep their feathers in good condition for flying and insulation.

Our bird bath is an old stone sink which was presumably an earlier iteration of the white ceramic sink which is in the front courtyard, and which had been replaced by a stainless steel sink unit until we arrived and replaced that once again with a white butler sink. We also have a smaller modern bird bath outside the kitchen window, and we are constantly amazed at how many birds and different varieties use it. It is also amazing how quickly it dries up, and constantly needs re-filling.

.....Although its not that amazing when the Starlings arrive! We don't see many Starlings in our garden as a matter of course, but just towards the end of the drought period, we hosted a huge flock of starlings, which seemed to stay around for five or so days. In the mornings they would suddenly descend onto the birdbath, first one of two, then up to twelve (maximum capacity) splashing around, in and out, then fly into the tree, then back again. This would continue for several minutes, then a lull in proceedings, and then they would return for more!

As the photos had to be taken quickly through the window, not the best quality, but they give a flavour of the fun.





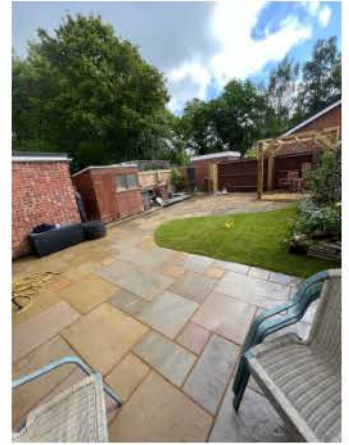
LANDSCAPING

Call us on: 07539872747

BMQLandscaping@outlook.com & More

Services:

Patios, Pergolas, Brickwork
Sleepers, Turfing, Fencing



5 ★ on Facebook and Google



Ventanilla Blinds

Conservatory Blinds - Day and Night Blinds

Rollers - Verticals - Roman - Pleated

Wooden, Faux Wood & Metal Venetians

Sheer Rollers - Blackout Blinds

Perfect Fit Pleated, Roller & Venetian

Contact Mike for a fast and friendly service

01787 313677 or 07966 371963

www.ventanillablinds.com

CLUBS & ORGANISATIONS (useful numbers)

If your club or organisation is not listed here and you would like to be included, then please let me know on 01787 210354 or email bronwenstacey@btinternet.com

Allotments Secretary	Karl Debenham <i>The new Chair is Bryn Hurren</i>	07584 996211
Assington Baby and Toddler Group	Rev Tricia Box	07747 124592
Assington Books, Village Hall (see post office for times)	Michelle Bourner	07954 221773
Assington Farmshop	Maxine Gardiner	01787 211610
Assington Post Office, Village Hall	Mon 1.30-3.30, Wed 9-12	
Boxford CEVC Primary School (office@boxford.suffolk.sch.uk)	Head: Emma Lea	01787 210332
Brownies, Boxford	Moira Grant	01787 211513
Church - Treasurer (treasurerassington@parishchurch.co.uk)	Tony Hufnagel	
Churchwarden	Bronwen Stacey	01787 210354
Community Choir	Nettie Osman	07957 394780
County Councillor (james.finch@suffolk.gov.uk)	James Finch	01473 264993
District Councillor (Assington)	Lee Parker	07970 196884
Doctors surgery – Sudbury	Hardwicke House	01787 370011
Doctors surgery – Bures	Bures	01787 227529
Floodline 24/7	SCC Flood Management	0345 606 6171
Footpath Wardens		
Horticultural Society	Karen Wiles	
Member of Parliament (james.cartlidge.mp@parliament.uk)	James Cartlidge	020 7219 4875
Mobile Library - Vicary Estate Junction	Saturday 4th October	3pm - 3.30pm
Parish Council	Simon Thorogood	01787 227400
bronwenstacey@btinternet.com	Bronwen Stacey	01787 210354
david.wiles@live.co.uk	David Wiles	07811 108702
tony@howcroft.net	Tony Howcroft	
andrewpeterhill@hotmail.com	Andrew Hill	01787 827112
Parish Council - Clerk (assingtonpc@yahoo.com)	Christine Hargan	01449 674727
Pub – The Shoulder of Mutton		01787 210334
Stoke by Nayland C of E Primary School (admin@sbn.suffolk.sch.uk)	Head: Mrs Kelly McGrath	01206 262418
Vicar (vicar@parishchurch.co.uk)	The Revd Daniel Whiffin	07309 947039
Village Hall – Bookings	Karen Wiles	07983 002072
Village Hall - Caretaker	Sean Mills	07547 190948
Village Hall - Charity Secretary		
Womens Institute, Boxford (annie-phillips@hotmail.co.uk)	Annie Phillips	01787 211729

The Assington News is a community magazine funded primarily through adverts and donations, for which we are always most grateful. **ADVERTS. RATES pa : £20 for 1/8 size page advert, £35 for 1/4 page advert, £60 for 1/2 page advert, £120 for a full page advert. Contact Jeff Stacey, 01787 210354, assingtonassociation@icloud.com**
The Assington Association Bank Account details for payments and donations:
 Account no: **01345159**. Sort Code: **30-98-31**. Please make cheques payable to **The Assington Association**.

The ASSINGTON NEWS NOW IN COLOUR ONLINE at <https://assington-pc.gov.uk/assington-news/>

Editor	Bronwen Stacey, 01787 210354, email bronwenstacey@btinternet.com
Treasurer	Jeff Stacey, 01787 210354, assingtonassociation@icloud.com
Distributors	David & Ann Jarrett, Judy Bourner, Bryn Hurren & Lisa Brooks, Zoe Laughton, Sue Taylor, Jacqui Egglestone
Printer	Indigo Ross Design & Print Ltd, Sudbury 01787 880 260 hello@indigoross.co.uk
Auditor	Ian Clark, 01787 211133



THE FOXES DEN

KITCHEN AND ROOMS

eat • drink • sleep • relax

- The perfect place to host your special event - we can offer exclusive hire with a range of packages
- Private car park, 5 double en suite bedrooms plus 1 self contained lodge with private hot tub and patio area overlooking the countryside.
- Serving homemade breakfast, brunch, lunch and cakes, delicious coffee and we now have our alcohol license so join us for a drink on our terrace!



Opening Times

Tuesday to Friday - 8:30am to 3:00pm

Saturday - 09:30am to 2:00pm

Sunday - 9:30am to 12:30pm

www.thefoxesdenassington.com

FB : The Foxes Den Assington

IG: thefoxesden.assington

T: 01787 703 500

